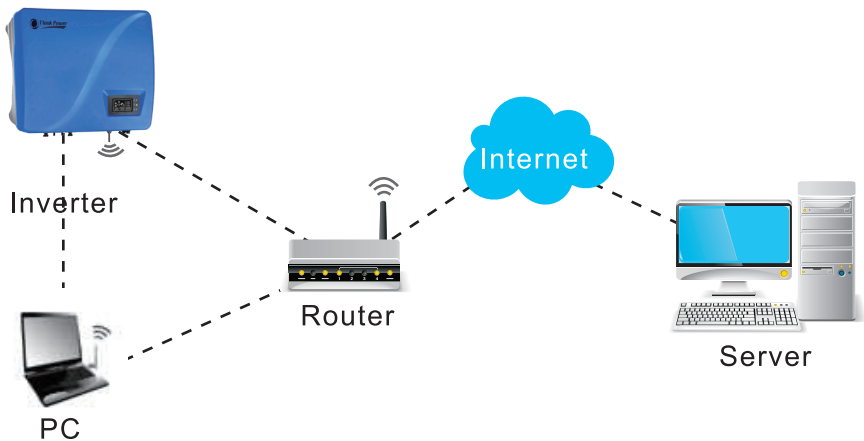
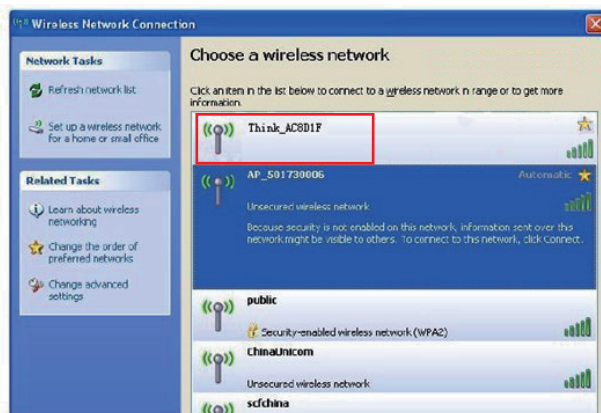


How to connect the Think Power inverter WiFi to your router?

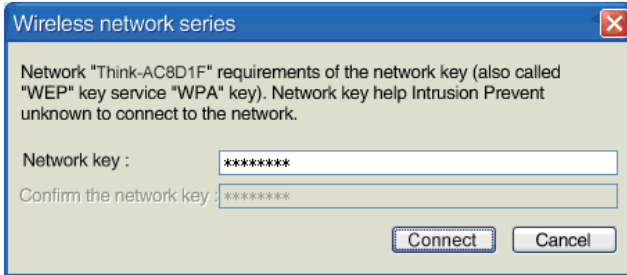
WiFi to your router?



- ◆ Find the wireless network connection for Think Power inverter. It should be called Think_AC8D1F or similar.



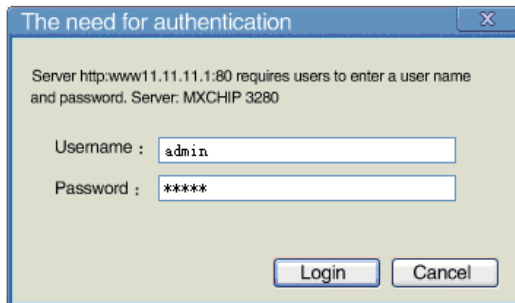
- ◆ When asked for the network security key, type in ID number(in the back page of “User Manual” or on the side of the inverter)



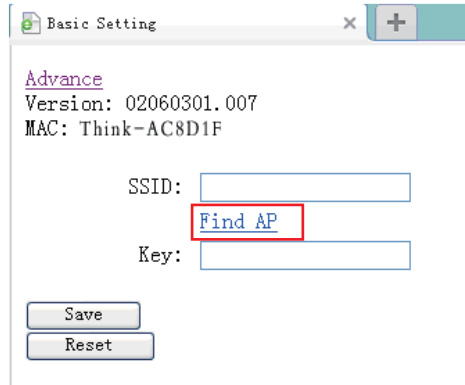
- ◆ Open internet browser, and type “11.11.11.1” in URL box.



- ◆ Windows Security, type in, Username: admin Password: andimm



- ◆ Click on "Find AP".



The screenshot shows a browser window titled "Basic Setting". The page content includes a link for "Advance", the version "02060301.007", and the MAC address "Think-AC8D1F". There are input fields for "SSID:" and "Key:". A "Find AP" button is highlighted with a red box. Below the input fields are "Save" and "Reset" buttons.

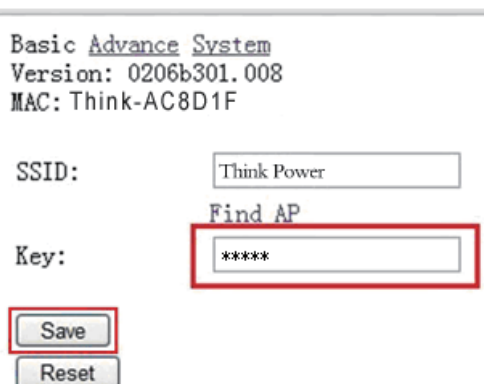
- ◆ Check the correct wireless network, then click "Save and Continue".

[Return](#)

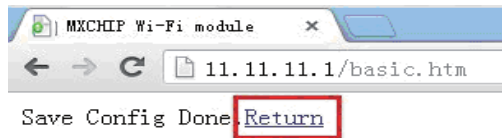
Available Wireless Network Details

SSID	Signal Strength (%)
<input checked="" type="radio"/> Think Power	42

- ◆ In the key blank enter the wireless router password. Then click "Save", and Then "Return".



The screenshot shows the "Basic Advance System" configuration page. It displays the version "0206b301.008" and MAC address "Think-AC8D1F". The "SSID:" field contains "Think Power". The "Key:" field contains "*****" and is highlighted with a red box. A "Find AP" link is visible above the key field. Below the fields are "Save" and "Reset" buttons, with the "Save" button also highlighted with a red box.



- ◆ Click on "Reset" button

Basic Advance System
Version: 0206b301.008
MAC: Think-AC8D1F

SSID:

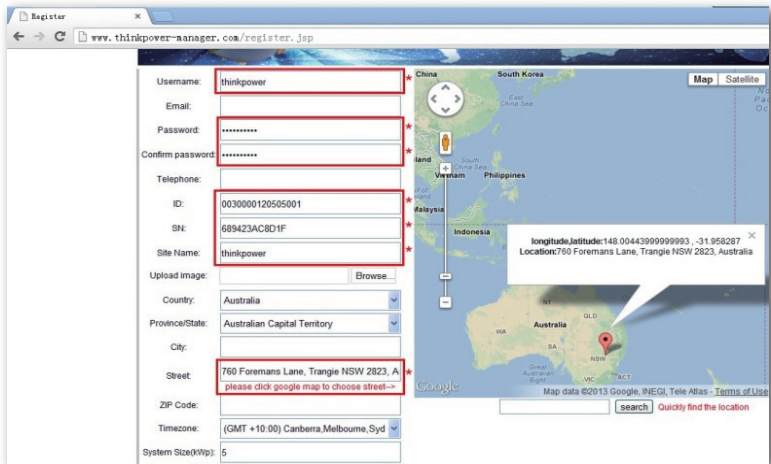
[Find AP](#)

Key:

- ◆ Now reconnect the computer to your wireless network
- ◆ Type "www.thinkpower-manager.com" into internet URL box at the top of the page.
- ◆ Click on "Register" button



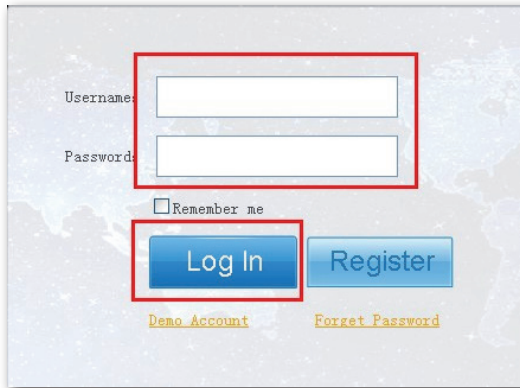
- ◆ Enter your details.
- ◆ The ID number is located on the back page of the “User Manual” or on the side of the inverter.
- ◆ The SN number is also located on the back page of the “ User Manual” or on the side of the inverter.
- ◆ When entering your address details, use the “Search” button underneath the Google maps to locate your premises. The details will be automatically entered into the correct box.
- ◆ Complete the rest of the details, time zone is also important, and then Check “Make the site public” button.



- ◆ Click “OK” to complete registration



- ◆ Return to Think Power Manager homepage (www.thinkpower-manager.com).
- ◆ Enter username and password, and click “Log In”.



- ◆ You can now view the performance for your solar system and add or change any of your details.

